

# Sensor Solutions

**ELSYS ERS**  
Temperature,  
humidity, occupancy



Monitor indoor comfort and occupancy to evidence environmental performance and optimise building conditions.

- Temperature accuracy  $\pm 0.2^{\circ}\text{C}$
- Humidity accuracy  $\pm 2\% \text{ RH}$
- Multi-sensor data from a single device
- Battery life up to 10 year

**Aduenis Delta P**  
Differential pressure ( $\Delta P$ )



Track pressure drop across filters and ventilation systems to maintain airflow performance and reduce plant issues.

- Differential pressure range  $-500$  to  $+500 \text{ Pa}$
- IP68-rated for plant rooms and HVAC environments
- Battery life greater than 10 years

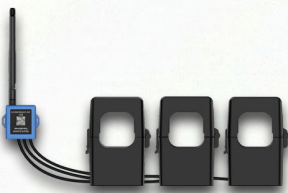
**EMU Professional II**  
Energy and power consumption  
across circuits or sites.



Accurately monitor energy use across circuits or sites to support billing, benchmarking, and targeted energy optimisation.

- MID Class B certified for compliant energy metering
- Measures energy and power at circuit or asset level
- Supports direct connection or external CTs

**Milesight CT303/5**  
Current and electrical load  
on equipment/plant



Monitor plant electrical load to detect abnormal operation and support performance benchmarking.

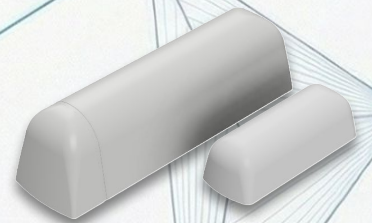
- Non-intrusive clamp CT installation
- Continuous load and current monitoring
- Suitable for motors, pumps, and AHUs
- Retrofit-friendly design

**Tektelic VIVID**  
Desk / room occupancy via  
motion detection.



- Motion-based occupancy detection suited to desk & shared spaces.
- Wireless design supports highly scalable space usage tracking.
- Integrates discrete occupancy counts into platform analytics.

**Elsys EMS Door**  
Door open/closed events



- Wireless door usage events captured via magnet switch and acceleration.
- Compact design allows discrete placement on any door.



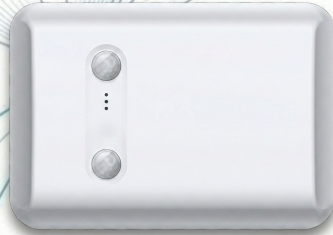
# Sensor Solutions

**Advantech WISE-2410**  
Vibration and temperature



- 3-axis vibration sensing up to 1,000 Hz
- On-board signal processing for condition indicators
- IP66-rated rugged enclosure
- Designed for industrial environments

**Milesight VS350**  
Footfall and people movement



- Anonymous, privacy-safe people counting
- Suitable for high-traffic environments
- Enables trend analysis over time
- Supports capacity planning and space optimisation

**AS-202 Car Park IAQ**  
Carbon monoxide (CO), nitrogen dioxide (NO<sub>2</sub>), temperature, humidity



Deploy in car parks to identify pollution hotspots, validate ventilation performance, and trigger alerts when air quality deteriorates. A dedicated air quality sensor designed for car parks, providing visibility of pollutant build-up and ventilation effectiveness.

**BMeters Hydrodigit M1**  
Water consumption



Use for tenant or zone-level water monitoring to improve visibility, reduce waste, and support billing or reporting.

- Digital display with 8 digits
- Available for cold and hot water applications
- Integrated communication module options: WM-Bus and/or LoRa

**Elsys ELT**  
External inputs  
(analogue/digital/pulse)



Use as a flexible “bridge sensor” to bring non-LoRa probes and meters into the platform for remote monitoring

- IP67 enclosure
- LoRaWAN certified
- Designed for outdoor mounting and harsh condition

**Elsys ERS CO<sub>2</sub>**  
CO<sub>2</sub>, temperature, humidity, light, motion



Use to evidence ventilation and comfort, identify persistently poor IAQ zones, and support targeted HVAC adjustments based on real conditions.

- CO<sub>2</sub> + temperature + humidity + light + motion in one unit
- Wall-mount, indoor sensor format
- Wireless, battery powered
- Configuration via NFC



# Sensor Solutions

**L & G Heat Meters**  
Heat energy consumption



Ultrasonic heat and cooling meter used to accurately quantify thermal energy consumption in building systems, residential and commercial circuits to support accurate billing, performance benchmarking, and efficiency validation.

**MClimate Flood**  
Flood/leak detection



Place under risers, plant rooms, comms rooms, kitchens or WCs to catch leaks early and trigger fast response before damage escalates.

- Instant flood detection on water contact
- Up to 10-year battery life

**Milesight EM300 Rope Leak**  
Flood/leak detection



Deploy along leak-prone routes to trigger alerts at the first sign of water and prevent outages or damage.

- Leak response time < 2 seconds
- IP67-rated enclosure
- Temperature accuracy  $\pm 0.3^{\circ}$
- Up to 5-year battery life

**SenseCAP S2120**  
Weather Station



Use for on-site weather context to explain building performance trends against local outdoor conditions.

Air temperature, humidity, wind speed, wind direction, rainfall intensity, light intensity, UV index, barometric pressure.

**Milesight GS101**  
Methane Leakage



Install in gas-risk areas to provide early warning of leaks and support rapid response to prevent incidents.

- Triggers LED and buzzer alarms on gas leak threshold
- Can support output control for valves/fans
- Low alarm threshold positioning includes 8% LEL claim

**Milesight WT101 TRV**  
Temperature and heating regulation



Use for room-level heating optimisation to reduce energy waste and improve comfort without altering the whole building schedule.

- Temperature accuracy  $\pm 0.5^{\circ}\text{C}$
- Supports up to 16 heating schedules
- Open-window detection
- Freeze protection function



# Sensor Solutions

The 4D Monitoring platform brings all sensor data into one secure online system, providing real time visibility of building performance across comfort, energy, space and asset health.



## Live feed

View live sensor readings as they happen across your estate. The live feed shows current temperatures, energy use, pressures, air quality and more, helping teams identify issues immediately rather than relying on delayed reports or site visits.

## Historical data and trends

Access both live and historical data from every connected sensor. This allows users to analyse trends over time, compare performance periods, and understand how buildings behave seasonally or operational

## Alerts and notifications

Set automated alerts when readings move outside expected thresholds. Alerts help teams respond quickly to issues such as overheating, abnormal energy use or equipment drift before they escalate.